

MONTHLY MEMBERSHIP PROGRESS REPORT

District 12 I

Results as of: 5/31/2026

GMT:

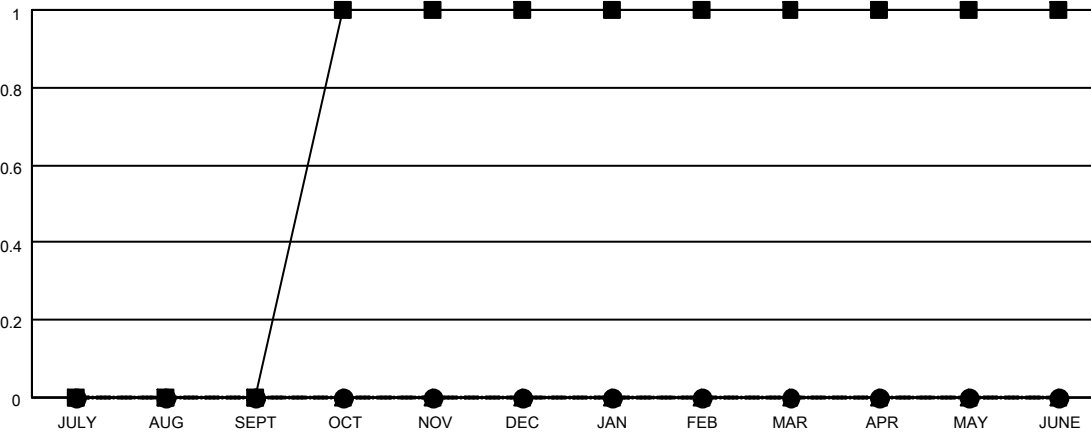
LOCATION TENNESSEE

GMT CA

Clubs			
RESULTS FOR 2025-2026			
QUARTER	NEW CLUB GOAL	NEW CLUBS	DROPPED CLUBS
JULY/AUG/SEPT	0	0	0
OCT/NOV/DEC	1	0	0
JAN/FEB/MAR	0	0	1
APR/MAY/JUNE	0	0	0

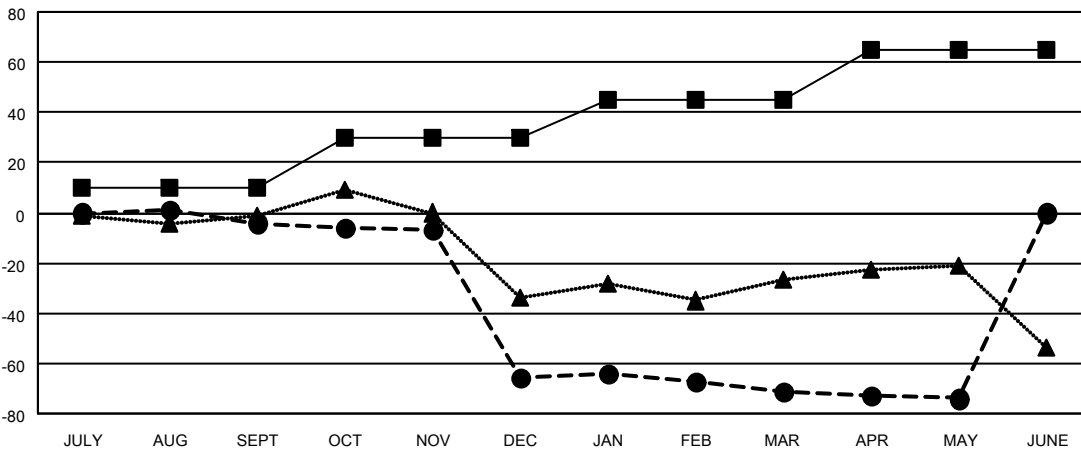
Members			
RESULTS FOR 2025-2026			
QUARTER	MEMBER GROWTH NET GOAL	MEMBER GROWTH ACTUAL	DROPPED MEMBERS ACTUAL (including transfers)
JULY/AUG/SEPT	10	31	19
OCT/NOV/DEC	20	12	74
JAN/FEB/MAR	15	15	18
APR/MAY/JUNE	20	11	14

GOALS AND ACTUAL NEW CLUBS CUMULATIVE



- - CURRENT YEAR GOALS FOR NEW CLUBS
- - CURRENT YEAR ACTUAL NEW CLUBS
- ▲ - LAST YEAR ACTUAL NEW CLUBS

GOALS AND ACTUAL MEMBERS CUMULATIVE



- - MEMBER GROWTH NET GOAL
- - MEMBER GROWTH ACTUAL
- ▲ - LAST YEAR MEMBERSHIP ACTUAL

DROPPED CLUBS: 1	
DROPPED MEMBERS	
DECEASED	18
CLUB CANCELLED	0
OTHER	107
TOTAL	125

18 CLUBS OF 34 ADDED 1 OR MORE NEW MEMBERS

GENDER DISTRIBUTION	
MALE	460 (64.07%)
FEMALE	258 (35.93%)

[CLICK HERE FOR CUMULATIVE MEMBERSHIP DATA](#)

TOTAL FAMILY UNIT MEMBERS	152
FAMILY MEMBERS PAYING HALF DUES	78